

Access all your data using LEA Analysis

Introduction

Unchained Labs has eliminated the middleman with the LEA Analysis Add-in, LEA Analysis for short. Now you can search your entire LEA database and create any report you want directly from Excel. No more exporting, copying, cutting and pasting your data from PolyView. Generating reports is now just a few clicks away.

Searching is a snap

Just open the "ADD-INS" tab in Excel, click on LEA Analysis, and then select the type of search you want to do. Use the "Search" button to rapidly find your results in the database (Figure 1). You can easily open results from multiple analytics in one spreadsheet. You can also search for the most relevant results by excluding various types of data.

Build and save your search

Click on "Advanced Search" (Figure 2) to view the results of an entire study and quickly build reports. Advanced Search shows the relationships between all of your experimental results (libraries and designs). Global filters make it easy to select and show only the data you need to see. Save your search parameters to streamline future searches for you and your colleagues (Figure 3).

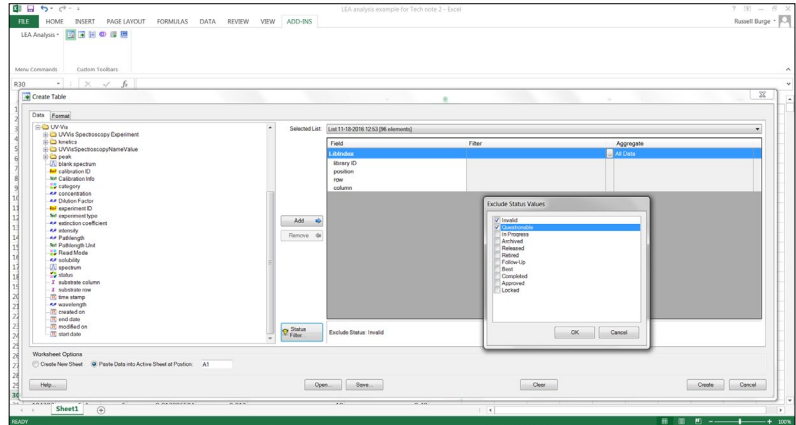


Figure 1: LEA Analysis lets you search for and filter data from your entire LEA database directly in Excel.

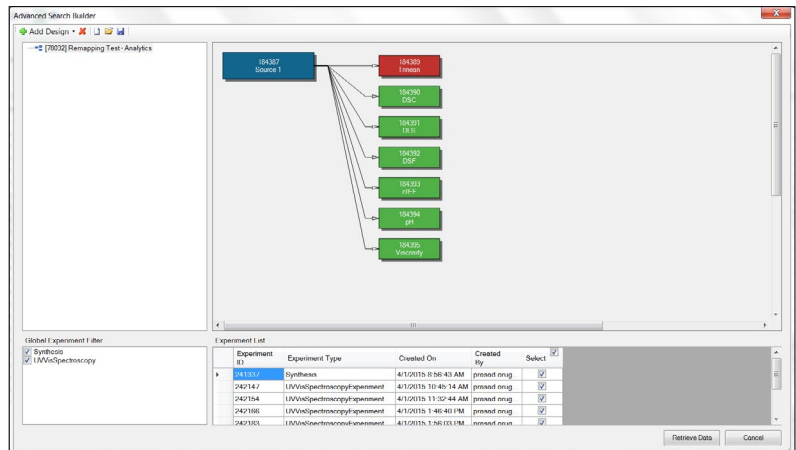


Figure 2: LEA Analysis shows you the names and relationships of all the experiments in your LEA database.

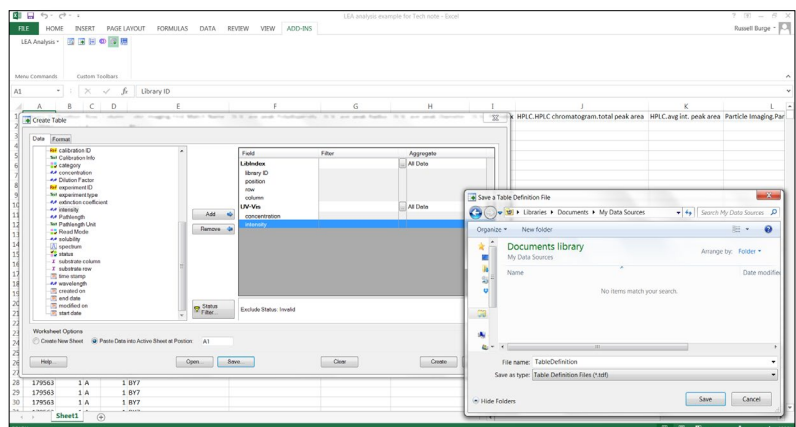


Figure 3: Building and saving search definitions is done in LEA Analysis with a few clicks.

Present your results as a comprehensive report

You've searched the database, selected the results you want and saved your search definitions for later. The only thing left to do is present your results. Click "Create" and the results open directly in an Excel spreadsheet – done deal (Figure 4).

Library ID	Position	Row	Column	UV-Vis.concentration	UV-Vis.intensity	Particle Imaging.Particle Count	Turbidity Imaging.Turbidity
184387	1 A	1	1		0.589	1	7.67
184387	1 A	1	1		0.589	1	8.48
184387	1 A	1	1	0.59	0.589	1	11.24
184387	1 A	1	1		0.589	1	78.54
184387	1 A	1	1		0.589	1	7.67
184387	1 A	1	1	0.59	0.589	1	8.48
184387	2 A	2	2		0.137	1	11.24
184387	2 A	2	2		0.137	1	78.54
184387	2 A	2	2	0.14	0.137	18	7.67
184387	2 A	2	2		0.137	18	8.48
184387	2 A	2	2		0.137	18	11.24
184387	2 A	2	2	0.14	0.137	18	78.54
184387	3 A	3	3		0.871	1	7.67
184387	3 A	3	3		0.871	1	8.48
184387	3 A	3	3	0.87	0.871	1	11.24
184387	3 A	3	3		0.871	1	78.54
184387	3 A	3	3		0.871	1	7.67
184387	3 A	3	3	0.87	0.871	1	8.48
184387	4 A	4	4		0.465	1	11.24

Figure 4: Making tables and charts for your reports is now painless when you use LEA Analysis.

Summary

You can now search the LEA database directly from Excel using LEA Analysis. LEA Analysis shows the names and relationships of libraries and designs so searching for the results you need is quick and easy. Creating and formatting tables with your data in Excel is now a straightforward process when you use LEA Analysis.



Unchained Labs
 6870 Koll Center Parkway
 Pleasanton, CA 94566
 Phone: 1.925.587.9800
 Toll-free: 1.800.815.6384
 Email: info@unchainedlabs.com

© 2016 Unchained Labs. All rights reserved. The Unchained Labs logo and LEA are trademarks and/or registered trademarks of Unchained Labs. All other brands or product names mentioned are trademarks owned by their respective organizations.